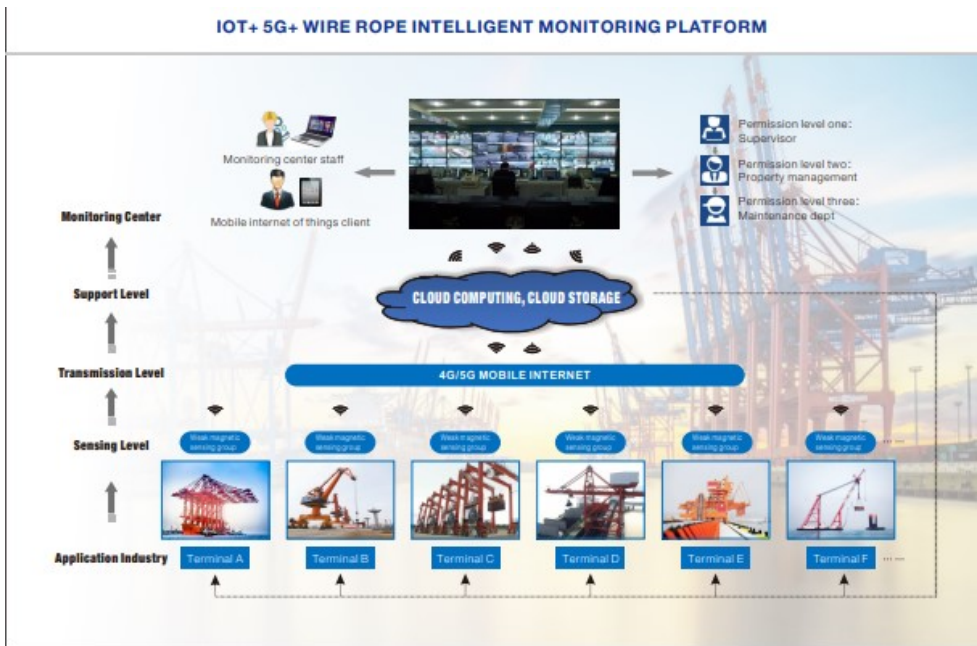
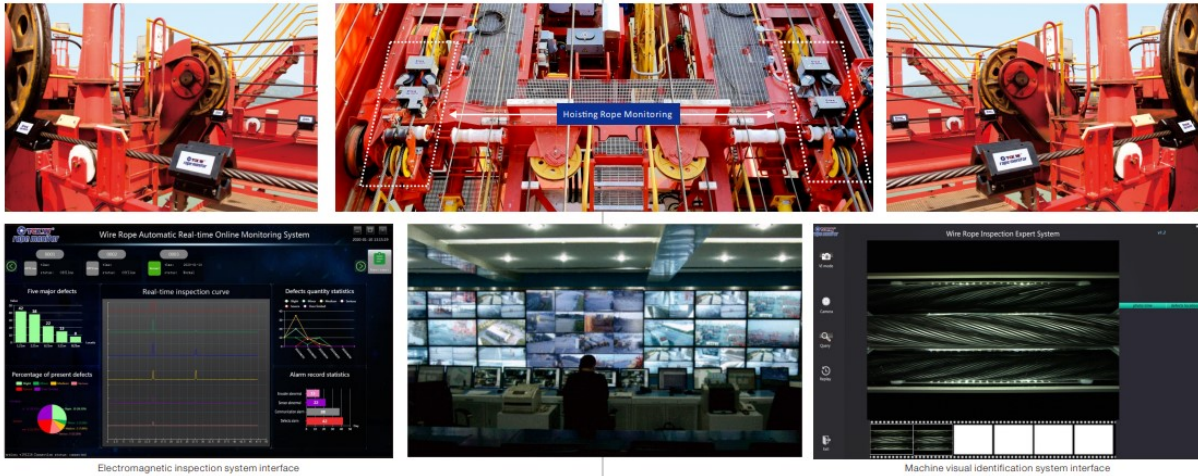


Online Automatic Wire Rope Inspection System

CRANE





Electromagnetic inspection system interface

Machine visual identification system interface

Technical Parameters

- (1) 24hX365d online real-time automatic monitoring
- (2) Inspection range of wire rope: $\Phi 16\text{--}60\text{mm}$;
- (3) Monitoring speed: 0-10m/s;
- (4) Pass-through capability: non-influenced with warp, grease or deformation
- (5) Air gap between sensor and rope: 10~30mm;
- (6) Swing threshold of rope tested: <10mm
- (7) Sensor sensitivity: 1.5V/mT;
- (8) Signal-to-noise ratio: $S/N > 85\text{dB}$;
- (9) Max. sampling rate: 2048times/m;

- (10) Working voltage: AC220V/ 127V $\pm 10\%$ /50/60 Hz;
- (11) System communication network: wireless, WIFI, wired industrial Ethernet.
- (12) Docking communication protocol: TCP/IP, modbus;
- (13) Ingress protection: IP67;
- (14) Working environment: -20 $^{\circ}\text{C}$ ~+60 $^{\circ}\text{C}$ /RH 95%;
- (15) Continuous working hours: $\geq 168\text{h}$;
- (16) Service life of equipment: ≥ 10 years;

DRILLING



Technical Parameters

- (1) Inspection range of wire rope: $\Phi 16-80\text{mm}$;

(2) LMA inspection uncertainty: $<\pm 1\%$;

(3) Flaw positioning accuracy: $\geq 99\%$;

(4) Inspection speed: $0-8\text{m/s}$;

(5) Monitoring speed: $0-20\text{m/s}$;

(6) Passing-through capability: Non-interference with warp, grease or deformation;

(7) Clearance between sensor and wire rope: $10-30\text{mm}$;

(8) Max. amplitude of wire rope: $<10\text{mm}$;

(9) Sensor sensitivity: 1.5V/mT ;
- (10) Signal-to-noise ratio: $\text{S/N}>85\text{dB}$;

(11) Max. sampling rate: 2048times/m ;

(12) Working voltage: $\text{AC}220\text{V}\pm 10\%/50/60\text{Hz}$;

(13) Communication network: WiFi or industrial Ethernet;

(14) Docking communication protocol: TCP/IP, Modbus;

(15) Ingress protection: IP67;

(16) Working environment: $-40^{\circ}\text{C}-+60^{\circ}\text{C}/\text{RH}95\%$;

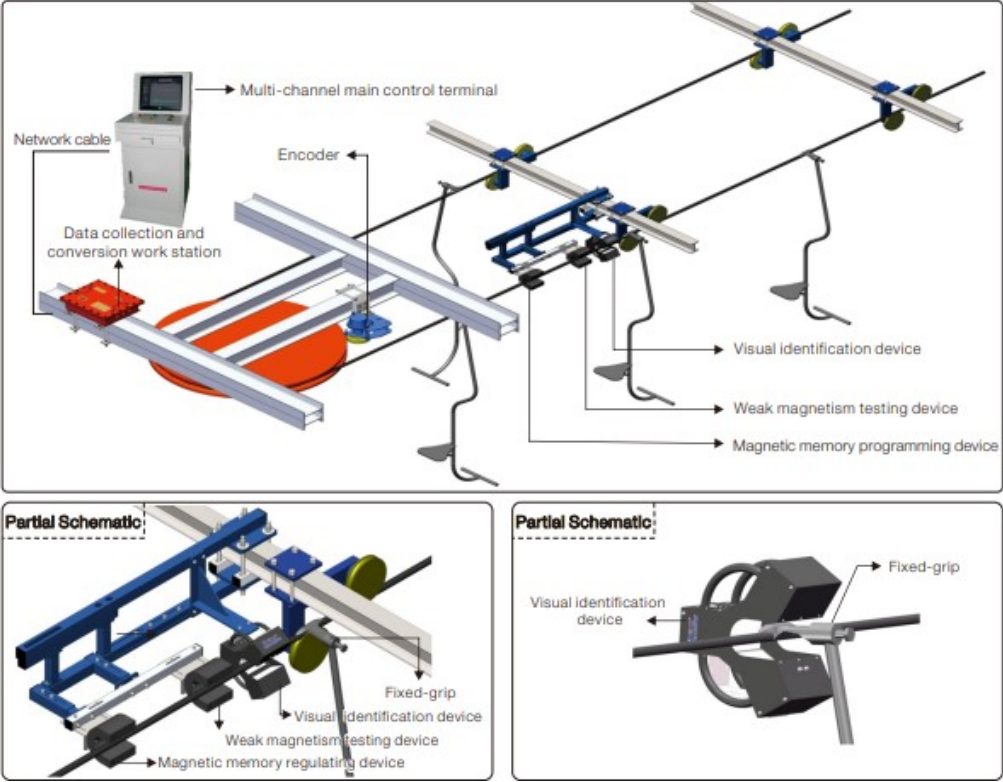
(17) Continuous working hours: $\geq 168\text{h}$;

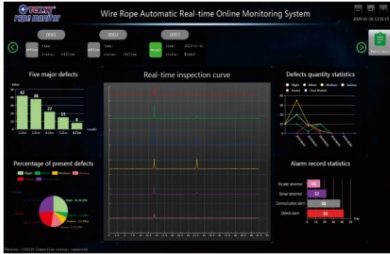
(18) Service life of equipment: $\geq 10\text{ years}$;

ROPEWAY



- Real-time monitoring safety state of rope on both sides of fixed grip, monitoring entire endless rope, no blind area.
- Accurately inspect all kinds of potential safety hazard of wire rope such as broken wire, abrasion, corrosion, fatigue, deformation, dia. reduction etc.





Electromagnetic inspection system interface



Machine visual identification system interface

Technical Parameters

Main Function of Device:

- Wire rope whole service life under safety control
- Synchronized inspection during high-speed operation
- Replacing Manual Inspection with Machine Visual Identification Inspection
- Integration of MRT&VI System
- Internet + expert inspection with remote diagnosis

Other Technical Parameters:

- Rope speed for inspection: 0-4 m / s
- Rope speed for monitoring: 0-15 m / s

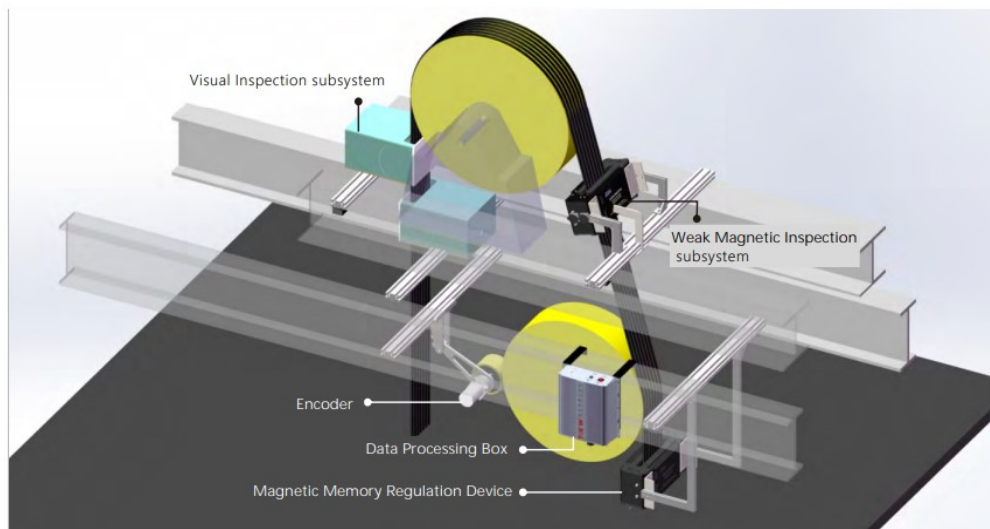
- Wire rope diameter range: $\Phi 26-76\text{mm}$
- Sensor working sensitivity: $\geq 1.5 \text{ V/mT}$
- MRT maximum sampling frequency response: 2048 times/m
- Machine visual identification sampling frequency response: $>20 \text{ times/s}$
- System working voltage: $\text{AC}220\text{V}\pm 10\%/50\text{Hz}/60\text{Hz}$
- System rated power: 300W
- Wire rope oscillating range: $< 10 \text{ mm}$
- Required space for device installation: $< \Phi 175\text{mm} \times 1200\text{mm}$
- Sensor working temperature: $-20^{\circ}\text{C}-55^{\circ}\text{C}$, Humidity: $\leq 95\%\text{RH}$
- Ingress protection: IP54

ELEVATOR

Elevator Wire Rope Intelligent Inspection Expert System

Technical Parameters

Mode	TCK.W-DT813	TCK.W-AI-DT624-220	TCK.W-AI-DT1622-130
Inspection range of wire rope	8-13mm	6-24mm	8-16mm
Width of the ropes	Single Rope	< 220mm	< 130mm
Dimension(mm)	300*140*70	350*230*150	252*207*125
Inspection speed	0-3m/s		
Amplitude of wire rope	< 5mm		
Sensitivity of sensor	1.5V/mT		
Electric magnetic sensing signal-to-noise ratio	S/N > 85dB		
Operating voltage	DC5V		
Operating current	500mA		
Continuous operation hours of battery	≥ 8h		
Ingress protection	IP53		
Working environment of sensor	Temperature: -20°C ~ 55°C Humidity: ≤ 95%RH		



Elevator Traction Belt Broken Cord Monitoring Device

Technical Parameters

- Specification/model: TCK.W-GDAJ model
- Application traction belt width: 30-60mm
- Applicable steel core number: 10-30 pieces
- Steel core diameter range: ≤ 2mm
- Traction belt number under synchronized monitoring: 1-5 pieces
- Device working environment: Temperature -10°C-55°C
- Humidity: ≤ 95%RH
- Broken core detectability: 100%
- Device power supply: DC24V
- Power: ≤ 15W
- Alarm mode: Sound and light alarm
- Technical expansion: Can be customized as per client's requirement

